

GLASS
QUARTER
STOURBRIDGE

CONTEMPORARY MAKERS & DESIGNERS



Flamenco Dancer Cameo Ruby with blue overlay, then white overlay

The Stourbridge Glass Quarter has been home to glassmaking for 400 years and the name 'Stourbridge Glass' is prized internationally.

The studio glassmakers of today are continuing the traditions of craftsmanship and innovation which were hallmarks of the Stourbridge glass industry. Visitors can experience the wonders of this most versatile material by exploring the various studios, workshops, retail outlets and heritage sites that the Glass Quarter has to offer.

www.glassquarter.org.uk



Broadfield House Glass Museum - admission free

Compton Drive, Kingswinford, DY6 9NS

01384 812745 • Open 12noon - 4pm • Tue to Sun

www.glassmuseum.org.uk

glass.museum@dudley.gov.uk

One of the major glass museums in the world with a magnificent collection of British glass, much of it made locally dating from the 17th century to the present day. An interesting programme of events and temporary exhibitions complement the glass displays. Books on glass and gifts handmade in the UK can be found in the gift shop. There is also a hot glass studio where visitors can watch the glassmakers at work from Wednesday to Sunday.

Special workshops and events are held throughout the year including a beads day, paperweight day, family-friendly activities and craft clubs for adults and children.



Red House Glass Cone - admission free

High Street, Wordsley, Stourbridge, DY8 4AZ

01384 812750 • Open 10am - 4pm • Mon to Sun

www.redhousecone.co.uk

redhouse.cone@dudley.gov.uk

Reaching 100ft into the sky this glass heritage visitor attraction is an impressive site on the Stourbridge landscape and an integral part of the historic Stourbridge Glass Quarter. Built at the end of the 18th century, the Red House Glass Cone, Wordsley was used for the manufacture of glass until 1936 and is now one of only four cones left in the United Kingdom.

Family-friendly events and activities take place throughout the year. There are free glass making demonstrations at weekends and scheduled demonstrations during school holidays. The gift shop and craft studios offer a range of locally produced glassware, handcrafted items, clocks and the Stourbridge Crystal Glass Centre on site is ideal for purchasing that special gift.

The Red Cone Coffee House offers an extensive menu including freshly ground coffee, real Belgian hot chocolate and a menu for children. The cone is the ideal choice for a fun and interesting day out.



Ruskin Glass Centre - admission free

Wollaston Road, Amblecote, Stourbridge, DY8 4HF
01384 399419 • Open 9.30am - 4.30pm • Mon to Sat
www.ruskinglasscentre.co.uk
enquiries@ghc.rmet.org.uk

The Glasshouse College: home to Ruskin Glass Centre, Webb Corbett Visitor Centre and the Glasshouse Arts Centre are free attractions all on one site.

Ruskin Glass Centre is home to 18 craft businesses with retail units to browse and an organic café. The businesses include handmade soaps, woodwork, stonework, photography and lots of beautiful glass.

Webb Corbett Visitor Centre celebrates 100 years of glassmaking with a Glass Heritage Officer on site to bring artefacts and exhibitions to life through guided tours. Guided tours are available from 10am to 3pm Tuesday to Saturday.

The Glasshouse Arts Centre boasts a 400 capacity auditorium, studio theatre and meeting rooms. It plays host to a range of activity from theatre and music performance to meetings, conferences and seminars.

With a varied and interesting events programme there are demonstrations and workshops for all ages and interests.

Studio at Broadfield House Glass Museum

Allister Malcolm Glass

07961 867206

www.allistermalcolm.com

info@allistermalcolm.com

Allister Malcolm is the resident Glass Artist at Broadfield House Glass Museum where the public may experience the art of glassmaking through his daily demonstrations. Allister has become a renowned craftsman within his field. He is continuously expanding upon his portfolio, welcoming all manner of commissioned work from corporate and private clients. His strong design sense combined with an impeccable standard of finish has created a dedicated collector base.

Open Wednesday to Sunday
12noon - 4pm



Allister Malcolm Photo © Simon Brunnell

Studios at Red House Glass Cone

Made @ the Cone

Based at the Red House Glass Cone in Stourbridge Made@the Cone is a collective of artists and designer makers. The collective create bespoke gifts, commissions, produce a monthly list of craft classes and carry out demonstrations of craft through the year. Studios that are part of this collective are marked with an asterisk*. Further details are available by visiting www.redhouseglasscone.co.uk



aa-rt* (Studio 1)

07875 577232

www.aa-rt.co.uk

info@aa-rt.co.uk

Commission artist and framing services, learn to paint and draw in on-site and off-site workshops and courses.

Open Monday, Thursday, Saturday and Sunday from 10am - 4pm

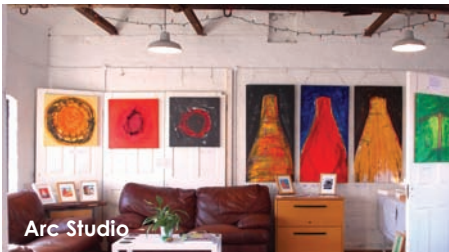
Arc Creative Arts* (Studio 13)

07910 424426

arccreativearts@gmail.com

The Arc studio is an atmospheric studio and gallery space in a unique listed workshop at the Red House Glass Cone. The resident artist is Martin Yates who specialises in vibrant, semi-abstract, contemporary canvases. His work includes views of the Glass Cone and much else besides. Prints (signed and framed) and artist-made cards are also available. Martin Yates is available for talks, demos, workshops, commissions, etc.

Open Saturday and Sunday 10am - 4pm
At other times by appointment - including evenings



Carl Palmer (located inside Stourbridge Crystal Glass Centre)

Copper Wheel Glass Engraver

01384 261777

07751 978731

Carl's glass engraving technique is known as copper wheel. Beautiful images are hand carved into the crystal giving a sculptured three dimensional effect. Carl is now one of the few remaining copper wheel engravers in the UK.

Open Monday to Sunday 10am-4pm

Catfox and Fingerprint* (Studio 11)

07725 219882

www.catfoxandfingerprint.co.uk

Find us on Facebook
[catfoxandfingerprint](https://www.facebook.com/catfoxandfingerprint)

Linocut and screenprint designs.

Open Monday, Thursday, Saturday & Sunday 10am - 4pm

Charlotte Hughes-Martin* (Studio 6)

07939 215293

www.charlottehughesmartin.com

info@charlottehughesmartin.com

Hot glass artist who specialises in engraving, sculpture and glass casting. One off sculptural glass pieces made as well as limited edition functional glass.

By appointment only

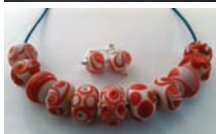
Fused Glass by Jane Ellis and Lampwork Beads by Sarah Jones* (Studio 7)

07746 686740

www.janeellisfusedglass.com
jspiral@blueyonder.co.uk

07825 828724

www.sarahjonesglass.com
sarahjonesglass@outlook.com



We are a fused glass and lamp work glass studio at the Red House Glass Cone. In the studio you will find many items for sale made by Jane and Sarah. You will also be able to see lamp work glass bead making

demonstrations throughout the days we are open. Sarah and Jane are also available to discuss their work and take commissions.

Open Monday, Thursday, Saturday and Sunday 10am-4pm

Workshops by appointment

Rebecca Handy Jewellery* (Studio 3)

07736 317956

www.rebeccahandy.co.uk
www.rebeccahanddesigns.co.uk
info@rebeccahandy.co.uk

Award winning jewellery designer and maker, regularly published in Beads and Beyond Magazine. Influenced by nature and lino print work. Commissions welcome.

Open Monday, Thursday, Saturday and Sunday 10am - 4pm

Saz's Ceramics & Crafts* (Studio 8)

07966 514766

www.sazsceramics.co.uk
saz_ceramics@blueyonder.co.uk

Saz's Ceramics and Crafts offer a range of creative workshops and parties for all ages and abilities. Choose from pottery painting to clay, hand building and throwing at the potters wheel, or have a go at decopatch,

mosaic and much more. We also sell a variety of crafty kits, finished ware and can personalise gifts for special occasions of all kinds, such as birthdays, christenings and retirements. Baby hand and footprints available by bookings.

Monday and Thursday by booking.
Open Saturday & Sunday 10am - 4pm

Schubey Chic (Studio 2)

07411 380925

www.schubeychic.co.uk

Schubey Chic is run by the proprietor Paul Schubert who provides unique items of furniture and home wares ensuring the 'Chic' in your Shabby Chic and industrial style furniture and decorative items.

The products are made by refinishing, renovating, rejuvenating and upcycling classic well made solid pieces of furniture which have become unloved and unwanted because it is out dated, outmoded, damaged or simply the wrong colour. Schubey Chic transforms these pieces back into desirable items for the home.



Other items are manufactured on site from materials such as reclaimed wood, iron work and vintage fixings and fittings. Handmade goods, cards and gifts are also produced and sold on site alongside retail items which compliment the style of the goods made on site.

Open Monday, Thursday, Saturday Sunday 10am - 4pm

Stourbridge Crystal Glass Centre

01384 261777

www.crystalglasscentre.co.uk

sales@britishcrystal.co.uk

Looking for a special gift? We have the largest selection of guaranteed English hand made crystal, made here in the world famous glass quarter by local craftsmen with over 400 years of glass making heritage. We offer a wide range of 31% lead crystal glass both barware and giftware with factory prices saving up to 50%. There is an engraving service on site and chip repair service available. We also stock in our showroom Royal Worcester, Churchill China, Port Merion and Ashleigh and Burwood and many more.

Open Monday to Sunday 10am - 4pm

Stuarts by Design (Studio 14)

01384 572037

www.stuartsbydesign.co.uk

contact@stuartsbydesign.co.uk

Stuarts by Design is a glass manufacturing company situated in 'Stuarts Clocks and Gifts' within the Red House Glass Cone. Our main effort sees us designing and producing recycled and up-cycled glass products. From bottle clocks to cheese boards, cufflinks to vases, all made from glass about to be thrown away. We offer this service to companies who want to show their recycling programme for the glass products they use.

Open Monday to Thursday 10am - 4pm
and Saturday 10am - 4pm



Stuart's by Design

Studios at Ruskin Glass Centre

Carol Griffin Enamels

07941 148345

www.carolgriffinenamels.com

carol@carolgriffinenamels.com

Contemporary unique vitreous enamelled artwork; wall panels, small bowls and jewellery. Work is mainly on copper, often formed and textured before applying thin layers of enamel to create vibrant and iridescent colours, landscapes and abstract forms. Enamel workshops and courses also available.

Open Tuesday to Saturday 10am - 4pm
By appointment at all other times

George F Jackson

0121 684 0759

07745 594629

gfglass@hotmail.co.uk

Individual sculptures and vessels using kiln formed glass-making techniques including pate de verre casting. Glass art and kiln working, including fusing and slumping, stained and leaded glass.

By appointment only

Jo Newman Glass

07530 968386

www.jonewmanglass.com

jonewmanglass@blueyonder.co.uk

Drawings, prints and kiln formed glass bringing together individual fused and cast glass elements to create compositions for interiors.

By appointment only

Kevin Barry Crystal

01384 399468

07951 031993

www.kevinbarrycrystal.co.uk

kevin.barry60@googlemail.com

Crystal glass showroom and decoration demonstration workshop open to the public, come and see Stourbridge glass

available. Special offer of free engraving on the glass purchased in the shop.

Also, bring your own bottles for engraving for that special occasion. 'Kev's Kreative Kidz Activities' drop in for one of our sandblasting sessions and we also do birthday parties.

Open Monday to Saturday 9am - 4pm

Martin Andrews Glass

01384 399462

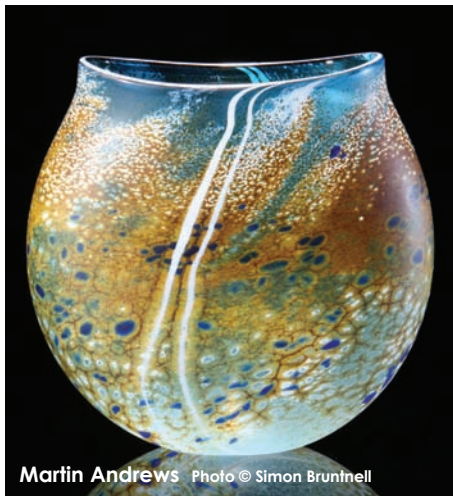
07801 233959

www.martinandrewsglass.com

info@martinandrewsglass.com

At Martin's glassblowing workshop and gallery shop you can see glassblowing and view Martin's amazing creations. Prices in the shop vary from £10 - £1000, for signed and dated pieces. Vouchers are also available for our popular glassblowing lessons.

Monday to Saturday 10.30am - 6pm



Redhouse Glass Crafts

01384 399460

redhouseglass@hotmail.co.uk

Crystal glass repair specialist.

Monday to Friday 10am - 4pm

Saturday by appointment only



Redpath Glass

07939 561489

www.redpathglass.co.uk

georgia@redpathglass.co.uk

Bespoke architectural and sculptural glass for the home and garden, using colour and pattern to bring light to life.

By appointment only

Stephen Foster Glass

07760 121328

www.stephenfosterglass.com

glassfos@hotmail.com

Innovative and exciting contemporary hand-blown glass.

By appointment only

Stourbridge Crafts

01384 399490

www.stourbridgecrafts.co.uk

info@stourbridgecrafts.co.uk

Craft studio and retail shop; specialising in individually designed and handmade glass lamp work, (flame worked) beads and jewellery, along with smaller sculptural and lampwork blown glass pieces. Also offers a range of workshops/courses in bead making and jewellery making as well as other disciplines.

Monday to Saturday 10am - 4pm

Stourbridge Glassblowing Studio

07763 385578



Glassblowing studio with glass artists Ian Bamforth, Vic Bamforth, Stephen Foster, Pete Fricker each producing diverse ranges of glass art. Ian offers tasters, courses - one to one and small groups. The studio is also available for hire at very competitive rates.

By appointment.

Stourbridge Glass Engravers Ltd

01384 399466

www.stourbridge-glass-engravers.co.uk
sales@stourbridge-glass-engravers.co.uk

We offer a comprehensive selection of glassware all of which are suitable for engraving. Combined with our experienced staff we have for decades produced high quality bespoke awards and gifts for every occasion. We also offer a complete artwork and design service completely free of charge.

Monday to Saturday 9.30am - 4.30pm

Terri L Colledge

01384 399466

07748 881818

www.terricolledgeglass.com
terri_lc@yahoo.co.uk

One of the most talented cameo engravers, Terri creates stunning pieces to the client's personal specification. Each piece is unique and made to commission. Also detailed enamel painting on glass.

Monday to Saturday
9.30am - 4.30pm



Photo © Simon Bruntnell

Transparent Glass Studio

01384 399412

www.transparentglasstudio.co.uk
info@paulfloyd.co.uk

Architectural glass studio creating bespoke traditional and contemporary glasswork, using stained glass, fused glass, kiln-formed and cast glass and sand-etching techniques. The studio also offers a repair and restoration service for traditional stained glass and leaded lights.

The studio also works with the wider community, local schools and colleges providing workshops, courses and creative projects.

By appointment only

Vic Bamforth Glass

07966 539181

www.vicbamforthglass.com
vicbamforthglass@gmail.com

Distinctive, unique painted and blown works of art glass. Exhibited and collected internationally specialising in commissions that capture memories and tell personal life stories.

Monday to Saturday 10am to 5pm

Glass studios & retail outlets

Brierley Hill Crystal

Pedmore Road, Brierley Hill
West Midlands DY5 1TJ

01384 77701/77486

www.brierleyhillcrystal.co.uk
sales@brierleyhillcrystal.co.uk

Brierley Hill Crystal are still a family owned company established in 1913, the oldest private owned crystal manufacturer in the UK. We guarantee all of our products have been handmade and handcrafted here in the heart of the glass industry. We have a factory shop on site selling all of our products with a viewing area where you can see our English crystal being made.

Our range of English handmade 31% lead crystal is admired by many with our historical skills and new design flare and are all individually packaged from British sourced packaging.

When giving a unique gift or marking a special occasion we all like to make the right impression, 'That's why Brierley Hill Crystal makes the ideal choice'.

Open Monday to Saturday 9am - 4pm

Crystalcraft

Unit 7B, Silverend Industrial Estate
Wedgebury Way, Brettell Lane
Brierley Hill DY5 3LA

01384 482991

www.crystalcraft.org.uk
crystalcraftuk@aol.com

Skilled sand engravers for the trade and public market. Awards, trophies and corporate presentation pieces are a speciality.

By appointment only

Dawn Crystal

3 High Street, Amblecote
Stourbridge DY8 4BX
01384 397524

www.dawncrystal.co.uk
dawncrystal1984@yahoo.co.uk

Large selection of traditional English hand cut crystal. Glass repair service, selection crystal for engraving, rare coloured cased crystal. Glass cutting and engraving by Reg Everton & Son family business established 1984. Specialised in unique pieces.

Open 9am - 5pm Monday to Friday
9am - 4.30pm Saturday

Jaqueline Cooley Glass Designs

07990 711565

www.jaquelinecooley.com
jaqueline@jaquelinecooley.com

Glass workshops open to the public. Large scale commissions and public art for interior and exterior. Bespoke trophies and studio glass from large one off pieces to jewellery.

By appointment only

Lauren Taylor Jewellery Design

Netley House, Gravel Hill
Wombourne, Staffordshire WV5 9HA
07968 099938

www.laurentaylorjewellery.co.uk
info@laurentaylorjewellery.co.uk

One of a kind glass jewellery and decorative objects. Jewellery designer Lauren trained at Central Saint Martin's school of design. Here she developed her techniques for creating intricate pieces from kiln formed and cold worked glass, accented with precious metals. Lauren is always happy to discuss ideas for a bespoke piece of jewellery of glass. A truly individual piece can be created to order under consultation with the client.

By appointment only

Plowden & Thompson Ltd

Dial Glass Works

Stewkins, Stourbridge DY8 4YN
01384 393398

www.plowden-thompson.com
sales@plowden-thompson.com

Manufacturers of technical glass for the aviation, motor, healthcare, building and other industries both for home and exports

markets. Specialists in glass manufacture using lead crystal, borosilicate and soda glass.

Open Monday to Friday 9am - 5pm

Simon Bruntnell Photography @ Northlight

07850 395193

www.northlightphotography.co.uk
simon.bruntnell@gmail.com

Creative commercial studio covering a wide range of photographic assignments to industry and the creative arts. Simon Bruntnell has gained a reputation for photographing the work of studio glass designers. A selection of prints and post cards available for purchase.

By appointment only

Steve Piper (Wheel Engraver)

01384 379015

07557 107539

Time serving craftsman Steve has become recognised as possibly the top glass engraver in the country undertaking special commissions for all occasions.

By appointment only

The Stourbridge Glass Collection Ltd

Cameo House
Shearwater Drive, Amblecote
Stourbridge DY5 2RD
01384 893346

www.stourbridge-glass.com
steve@stourbridge-glass.com

Combining over 25 years fine interiors and interior design experience worldwide with the skills of world class glass artists and creators. New and limited edition designs and fabulous glass features for hotels, restaurants, corporate buildings and superior residences

Open Monday to Friday 8.45am - 6pm

Tudor Crystal - Dial Glass Works

Stewkins, Stourbridge DY8 4YN
01384 392525

www.tudorcrystal.com
keith.smith@tudorcrystal.com

The last fully working multi furnace glassmaking cone in England making high quality 30% lead crystal tabletop products for the home and export market. Informative free tours of the factory to see the glass being made and cut are available by appointment. The factory

shop sells a selection of lead crystal 1st quality and seconds at discounted prices. Coaches welcome. Parking available. No refreshment facilities. Disabled toilets. One level access with sloping ramps.

Factory Shop Monday to Friday 10am - 5pm
Saturday 9.30am - 4.30pm

Glassmaking tour by appointment
Monday to Friday 9.30am - 12 noon

Colleges & courses

Dudley College

Dudley Evolve
Tower Street, Dudley DY1 1AF
01384 363056

www.dudleycol.ac.uk
stephen.foster@dudleycol.ac.uk

Evening class: You will be taught glass blowing, kiln work (fusing and slumping) and cold working techniques.

Hot glass taster day: You will learn to blow and manipulate hot glass from a furnace.

Associate ship in glass: For semi-professional or creative practitioners with some knowledge or a keen interest in glass.
By appointment only

University of Wolverhampton

School of Creative Arts & Design
Molineux Street, City Campus North
Wolverhampton WV1 1DT
01902 321000

www.wlv.ac.uk
enquiries@wlv.ac.uk

Paul McAllister (course leader)

BA (Hons) Applied Arts & MA Applied Arts (Ceramics and Glass). Hot glass, kiln glass, cold processing, mould making facilities alongside fully equipped ceramics and metals workshops with excellent tutor and technical support.

By appointment only

Organisations

Glass Collaborations

104 Worcester Street, Stourbridge
West Midlands DY8 1AY
01384 370482

www.glasscollaborations.com
glasscollaborations@hotmail.com

Glass Collaborations working with schools and colleges. Short courses offered in kiln formed glass and stained glass commissions accepted.

By appointment only

The International Festival of Glass

The International Festival of Glass is the highlight of every glass enthusiast's calendar. Taking place every two years it reinvigorates Stourbridge's reputation as a global glass centre drawing large national and international audiences to see glassmaking at its finest.



Louis Thompson (photo © Simon Brunnell)

Featuring world-class exhibitions, including the prestigious British Glass Biennale, demonstrations, performances and events, the festival shatters all preconceptions by presenting a multi-media, visually exciting and dynamic interpretation. Come and be amazed with events throughout the historic Glass Quarter.

To find out more go to www.ifg.org.uk or www.biennale.org.uk

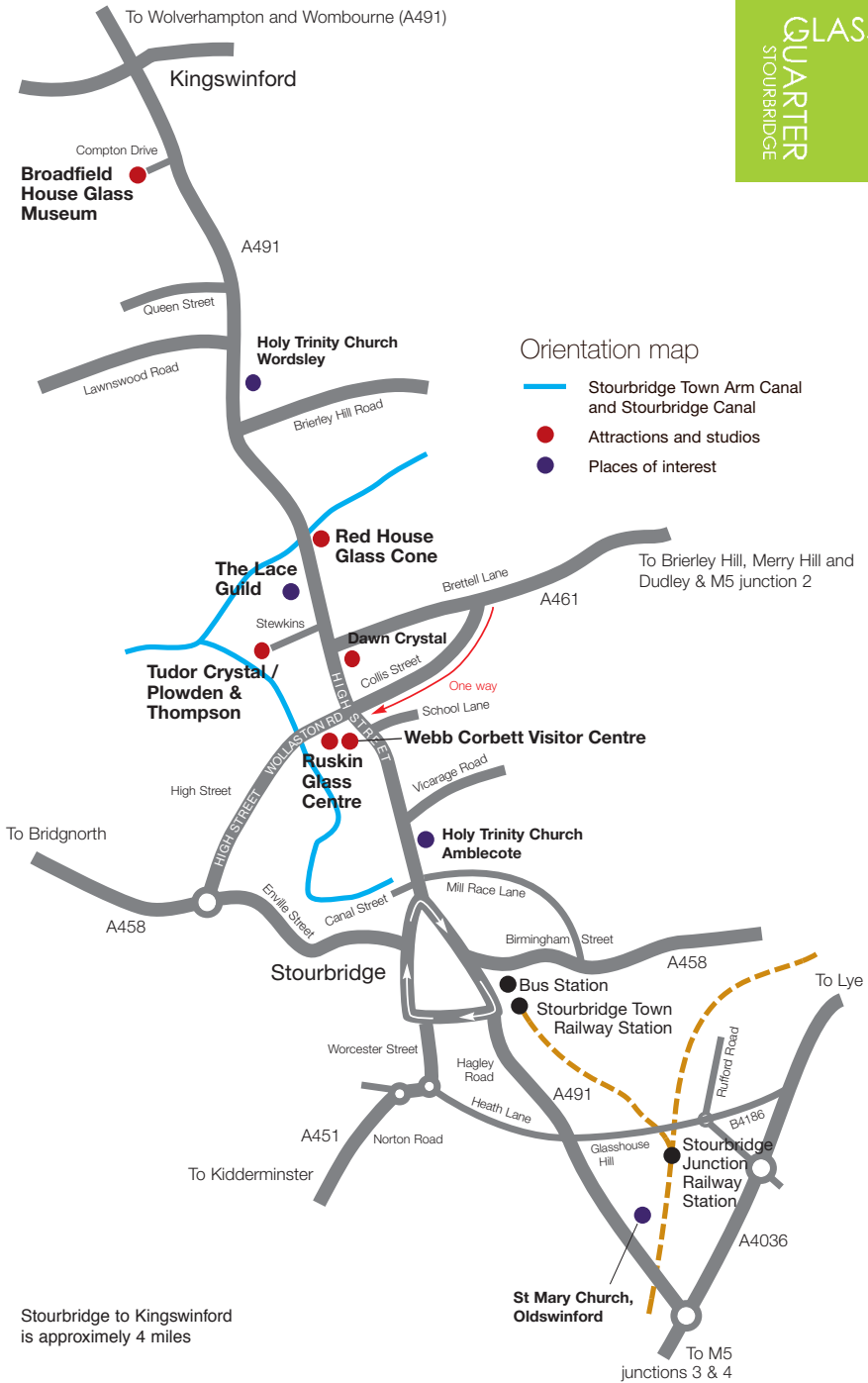
British Glass Foundation

The British Glass Foundation is a charity created in 2010 in response to the possibility of relocating the Stourbridge Glass Collection from Broadfield House Glass Museum. The charity comprises a group of enthusiasts from a variety of backgrounds who all share a common passion for glass. It independently seeks to represent all other charities, organisations, glass artists and individuals that have an interest in preserving the glass heritage of Stourbridge.

The Foundation aims to work closely with Dudley Council, the principal custodian of the glass collections, to accomplish its objectives and is exploring other means to provide access to the collections by finding a suitable new home.

For further details on the British Glass Foundation, to subscribe to the GlassCuts newsletter or to make a donation contact 01384 239019 or visit

www.britishglassfoundation.co.uk



Stourbridge to Kingswinford is approximately 4 miles

Short courses

Short courses are held throughout the Glass Quarter at our heritage sites, glass studios and glass companies. New courses and workshops are always being added to the programme. Visit our website for more information.

Red House Glass Cone

Learn about kiln fusing and make your own jewellery and coaster pieces.
Call 01384 815571 to book your place.

Ruskin Glass Centre

Taster fused glass workshops. Original pieces of glasswork using fusing techniques, working with coloured sheet glass, frits, powders and metal inclusions.
Call 01384 399419.

Visitor Information can be obtained from

Dudley Council Plus

259 Castle Street
Dudley, DY1 1LQ
0300 555 2345

www.discoverdudley.org.uk
tourism@dudley.gov.uk

Monday to Friday, 8am - 5.30pm
Saturday, 9am - 12noon

Stourbridge Library

Crown Centre
Stourbridge, DY8 1YE
01384 812945

Monday, 9.30am to 7pm
Tuesday to Friday, 9am to 7pm
Saturday, 9am to 5pm
Sunday, 10am to 2pm

www.glassquarter.org.uk

DISCLAIMER

It is recommended that visitors telephone to check opening times.

All information contained in this booklet has been provided by individual studio/makers and is published in good faith.

The Glass Quarter Development Group cannot be held responsible for any inaccuracies contained within.

Cover image: Terri Colledge. Photo credit to Dean Hopkins

Published June 2014 by The Glass Quarter Development Group/Graphics Studio, Dudley Council