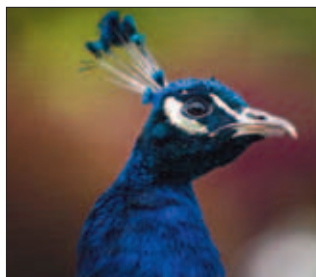


Enjoy the tranquility of
DRUMMOND GARDENS
Crieff, Perthshire

The Gardens were first laid out in the early 17th century by John Drummond the 2nd Earl of Perth. They were enlarged and redesigned in the 19th Century.



The gardens you see today were replanted after the second World War. Preserving features such as the old yew hedges and the copper beech tree planted by Queen Victoria to commemorate her visit in 1842.



LOCATION


2 miles south of Crieff on Muthill Road (A822). approximately 20 minutes drive from the A9

GARDENS OPEN 2018:

Easter Weekend, then daily
May, Sept, October 1 - 6pm
June, July, August 11 - 6pm
(Last admission 5pm)
CASTLE NOT OPEN

ADMISSION 2018:

Adults £6.00
Concessions £5.50
Children £2.00
Family Ticket 2+3 £14.00
Ample parking

 Partial access - phone for details

**DRUMMOND
GARDENS**
Crieff, Perthshire



Telephone (01764) 681433
Email: info@drummondcastlegardens.co.uk
Sat Nav Reference: PH7 4HN
Drummond Castle, Muthill, Crieff, PH7 4HZ

Grimsthorpe & Drummond Castle Trust Ltd
Charity Commission No. 507478 • Scottish Charity No. SC03964

*“One of the finest formal
gardens in Europe.”*

www.drummondcastlegardens.co.uk



DRUMMOND GARDENS

Crieff, Perthshire



The Gardens: Stone terraces lead down to a box parterre set amidst topiary.

The tranquility of the gardens makes them the perfect setting to sit or stroll amongst the formal planting.

It is now possible to enjoy a short walk through Daggan Wood, with great views of the castle.

