

# Essential information

## Bus Tours

A number of companies offer guided tours of the area. Visit [www.seemorecumbria.co.uk/hadrianswall](http://www.seemorecumbria.co.uk/hadrianswall) for details



## Regular Buses

685 - Carlisle bus station to Newcastle via Brampton and Haltwhistle;  
185 - Carlisle bus station to Brampton, Gilsland and Haltwhistle.  
Connect at Haltwhistle with AD122 Hadrian's Wall bus (seasonal).  
[www.visithadrianswall.co.uk](http://www.visithadrianswall.co.uk). [www.seemorecumbria.co.uk/hadrianswall](http://www.seemorecumbria.co.uk/hadrianswall)

## Special Tickets

Explorer and North West Megarider Gold. A number of other value tickets are available. Visit [www.seemorecumbria.co.uk/bybus](http://www.seemorecumbria.co.uk/bybus) for details. Don't forget PlusBus if you come by rail

## Bike Hire

Pedal Pushers, Brampton - 016977 42387 or 07770 976187  
Carlisle Leisure, Bitts Park, Carlisle - [www.cultureleisurelife.com](http://www.cultureleisurelife.com)  
or 01228 591628



## Pay-as-you-go Car Hire

From October 2015 a pay-as-you-go car will be available to hire from Carlisle train station. For more information visit [www.seemorecumbria.co.uk/hadrianswall](http://www.seemorecumbria.co.uk/hadrianswall).

**Ordnance Survey Map**  
Explorer 315

## Walking Routes

Hadrian's Wall Path - [www.nationaltrail.co.uk/hadrians-wall-path](http://www.nationaltrail.co.uk/hadrians-wall-path)  
Cumbria Way - [www.cumbriaway.org](http://www.cumbriaway.org)

## National Cycling Routes

NCN 72 Hadrian's Cycleway - [www.cycle-routes.org/hadrianscycleway](http://www.cycle-routes.org/hadrianscycleway)



# Travel to and through

## Getting here...

Manchester Airport to Carlisle



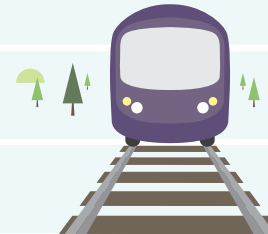
London Euston to Carlisle



Edinburgh to Carlisle



Glasgow to Carlisle



## Getting around...

Carlisle to Brampton



Carlisle to Lanercost



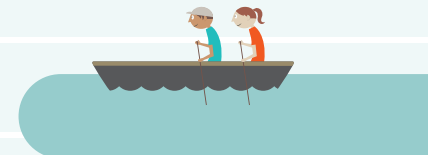
Carlisle to Gilsland



Carlisle to Haltwhistle



Carlisle to Hadrian's Wall - tour bus until 10<sup>th</sup> September 2015



Mini

# Traveller's Guide

## Carlisle to Hadrian's Wall



[seemorecumbria.co.uk](http://seemorecumbria.co.uk)



**SEE MORE**  
CUMBRIA AND THE LAKE DISTRICT

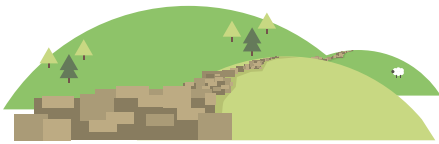
**SEE MORE** Funded by the Department for Transport. Delivered in partnership by Cumbria County Council, Lake District National Park Authority and Cumbria Tourism

# Discover Hadrian's Wall

Guided tour of Hadrian's Wall (11.30am pick up Mondays, Wednesdays and Thursdays; 12pm Saturdays, from Carlisle train station, until 10<sup>th</sup> September 2015). Departs Tullie House Museum and Art Gallery, Carlisle

via  
Tour  
Bus

Visit Birdoswald Roman Fort and Banks Turret plus other Roman sites [www.seemorecumbria.co.uk/hadrianswall](http://www.seemorecumbria.co.uk/hadrianswall)



## Places to visit

1	Tullie House, Carlisle	<a href="http://www.tulliehouse.co.uk">www.tulliehouse.co.uk</a>
2	Carlisle Cathedral	<a href="http://www.carlislecathedral.org.uk">www.carlislecathedral.org.uk</a>
3	Carlisle Castle	<a href="http://www.english-heritage.org.uk">www.english-heritage.org.uk</a>
4	Hadrian's Wall	<a href="http://www.visithadrianswall.co.uk">www.visithadrianswall.co.uk</a>
5	Talkin Tarn Country Park	<a href="http://www.discovercarlisle.co.uk/attractions">www.discovercarlisle.co.uk/attractions</a>
6	Lanercost Priory	<a href="http://www.english-heritage.org.uk">www.english-heritage.org.uk</a>
7	Lanercost Tea Room	<a href="http://www.lanercosttearoom.co.uk">www.lanercosttearoom.co.uk</a>
8	Banks Turret	<a href="http://www.english-heritage.org.uk">www.english-heritage.org.uk</a>
9	Birdoswald Fort	<a href="http://www.birdoswaldromanfort.org">www.birdoswaldromanfort.org</a>



### Find out more at:

**Traveline** - [www.traveline.info](http://www.traveline.info) | 0871 200 22 33

**National Rail** - [www.nationalrail.co.uk](http://www.nationalrail.co.uk)

**See More** - [www.seemorecumbria.co.uk/hadrianswall](http://www.seemorecumbria.co.uk/hadrianswall)

To Edinburgh  
and Glasgow

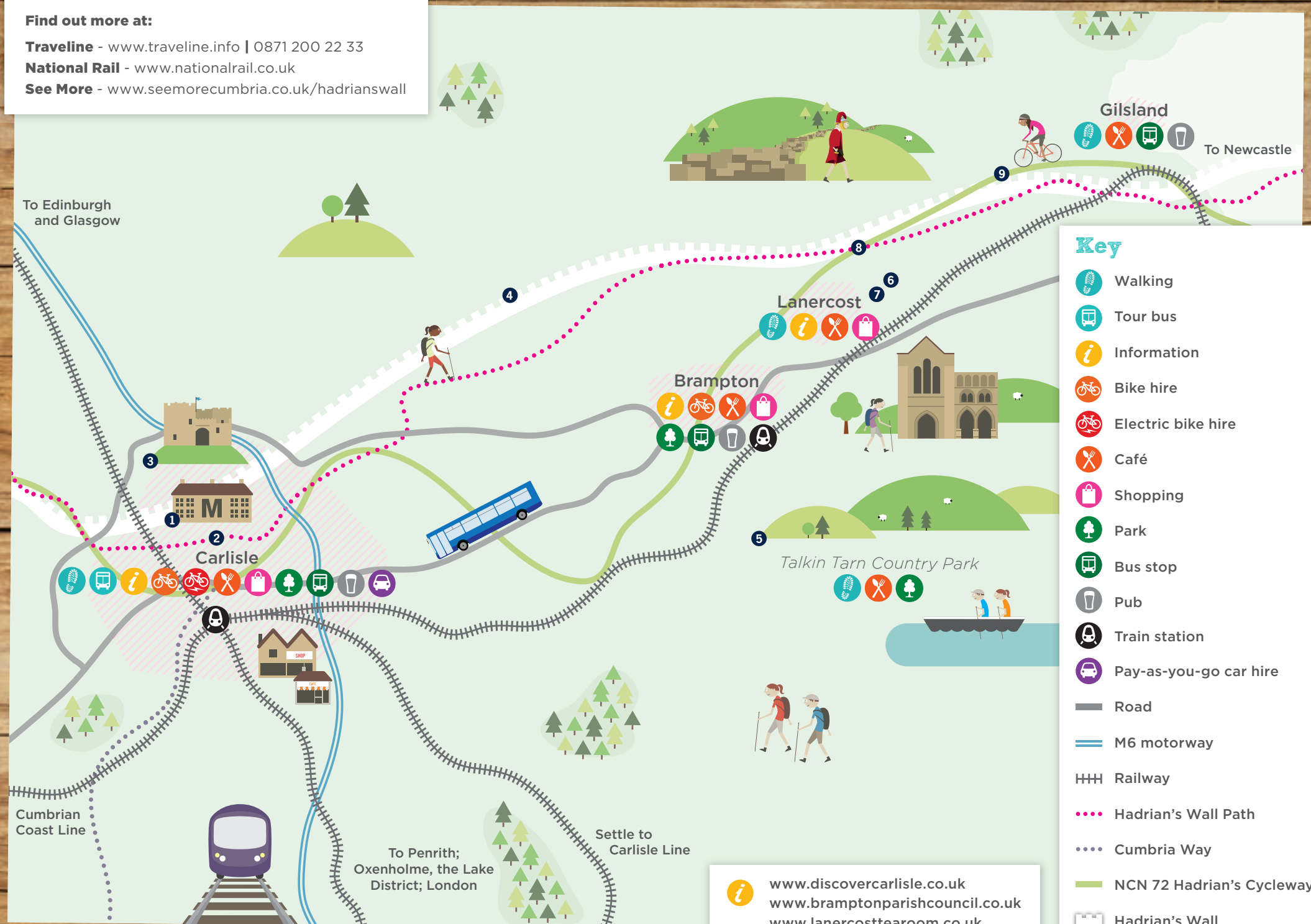
Cumbrian  
Coast Line

To Penrith;  
Oxenholme, the Lake  
District; London

Settle to  
Carlisle Line

Gilsland

To Newcastle



### Key

- Walking
- Tour bus
- Information
- Bike hire
- Electric bike hire
- Café
- Shopping
- Park
- Bus stop
- Pub
- Train station
- Pay-as-you-go car hire

- Road
- M6 motorway
- Railway
- Hadrian's Wall Path
- Cumbria Way
- NCN 72 Hadrian's Cycleway
- Hadrian's Wall

[www.discovercarlisle.co.uk](http://www.discovercarlisle.co.uk)  
[www.bramptonparishcouncil.co.uk](http://www.bramptonparishcouncil.co.uk)  
[www.lanercosttearoom.co.uk](http://www.lanercosttearoom.co.uk)